

Prospective resources

October, 2019

Oil equivalent
112.9 Bboe



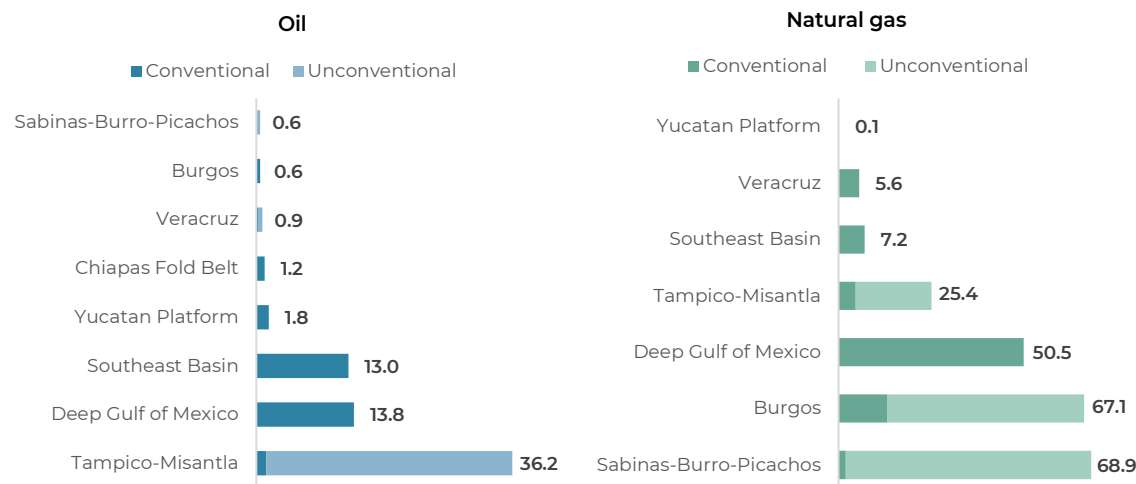
Oil
68.0 Bb



Gas
224.7 Tcf



Prospective resources	Burgos	Chiapas Fold Belt	Southeast Basin	Deep Gulf of Mexico	Yucatan Platform	Sabinas-Burro-Picachos	Tampico-Misantla	Veracruz	Total
Oil equivalent (Bboe)	14.0	1.2	14.5	23.9	1.8	14.3	41.3	2.0	112.9
Resources in conventional plays	3.2	1.2	14.5	23.9	1.8	0.4	2.3	1.4	48.7
Resources in unconventional plays	10.8	0.0	0.0	0.0	0.0	14.0	38.9	0.6	64.2
Oil (Bb)	0.6	1.2	13.0	13.8	1.8	0.6	36.2	0.9	68.0
Resources in conventional plays	0.6	1.2	13.0	13.8	1.8	0.0	1.4	0.3	32.1
Super lightweight oil	0.0	0.8	2.8	3.8	0.0	0.0	0.0	0.1	7.5
Light oil	0.6	0.4	7.6	6.7	0.1	0.0	1.2	0.2	16.7
Heavy oil	0.0	0.0	1.7	2.2	0.3	0.0	0.2	0.1	4.4
Extra-heavy oil	0.0	0.0	0.9	1.1	1.4	0.0	0.0	0.0	3.4
Resources in unconventional plays	0.0	0.0	0.0	0.0	0.0	0.6	34.8	0.6	35.9
Gas (Tcf)	67.1	0.0	7.2	50.5	0.1	68.9	25.4	5.6	224.7
Resources in conventional plays	13.2	0.0	7.2	50.5	0.1	2.0	4.7	5.6	83.2
Wet natural gas	11.8	0.0	2.1	24.7	0.1	0.1	0.7	2.4	41.9
Dry natural gas	1.4	0.0	5.1	25.8	0.0	1.9	4.0	3.2	41.4
Resources in unconventional plays	53.8	0.0	0.0	0.0	0.0	67.0	20.7	0.0	141.5
Wet natural gas	9.5	0.0	0.0	0.0	0.0	6.6	20.7	0.0	36.8
Dry natural gas	44.3	0.0	0.0	0.0	0.0	60.4	0.0	0.0	104.7



Note: Reported values at mean as the best estimate.

Source: Prospective resources historical database and estimates by the Comisión Nacional de Hidrocarburos.

Prospective resources: Estimated volume of hydrocarbons at a given date, corresponding to accumulations that have not yet been discovered but it is inferred that they exist based on available information and are estimated to be potentially recoverable through the application of future exploration and development projects.

Conventional play: A set of related fields or prospects, which share similar characteristics in deposit environment, seals, source rocks, traps, the process of hydrocarbons loading (generation, expulsion, synchrony, migration, accumulation and preservation) and type of hydrocarbons.

Unconventional play: Oil system confined in rocks of very fine grains (argillaceous or calcareous), that are organically rich, low in permeability, and are simultaneously generating, reservoir rocks and trap seal, with lithological characteristics that favor fragility indices to induce fracturing.

Bboe: billion barrels of oil equivalent.

Bb: billion barrels.

Tcf: trillion cubic feet.

Prospective resources

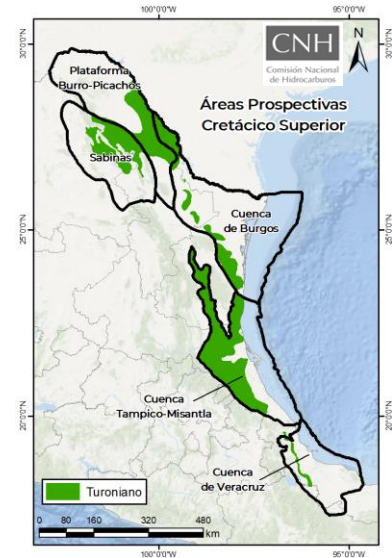
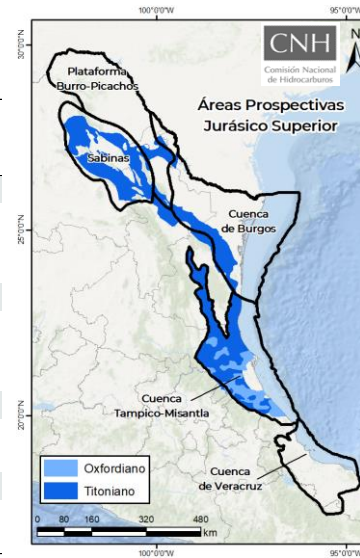
October, 2019

Unconventional prospective resources

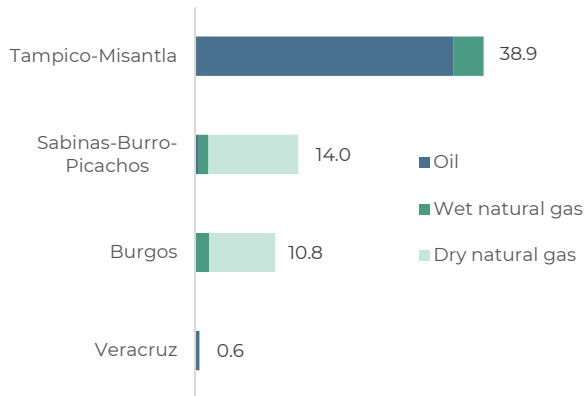
64.2 Bboe

Oil equivalent

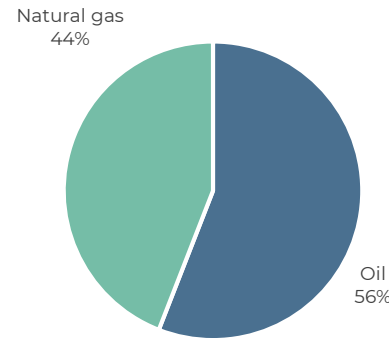
	Burgos	Sabinas - Burro - Picachos	Tampico-Misantla	Veracruz	Total
Oil equivalent (Bboe)	10.8	14.0	38.9	0.6	64.2
Upper cretaceous (Eagle Ford/Agua Nueva/Maltrata)	1.9	7.1	14.5	0.6	24.1
Upper jurassic tithonian (La Casita/Pimienta)	8.9	6.8	20.4	0.0	36.1
Upper jurassic oxfordian (Santiago)	0.0	0.0	4.0	0.0	4.0
Oil (Bb)	0.0	0.6	34.8	0.6	35.9
Upper cretaceous (Eagle Ford/Agua Nueva/Maltrata)	0.0	0.6	13.0	0.6	14.1
Upper jurassic tithonian (La Casita/Pimienta)	0.0	0.0	17.8	0.0	17.8
Upper jurassic oxfordian (Santiago)	0.0	0.0	4.0	0.0	4.0
Wet natural gas (Tcf)	9.5	6.6	20.7	0.0	36.8
Upper cretaceous (Eagle Ford/Agua Nueva/Maltrata)	9.5	6.6	7.6	0.0	23.7
Upper jurassic tithonian (La Casita/Pimienta)	0.0	0.0	13.1	0.0	13.1
Dry natural gas (Tcf)	44.3	60.4	0.0	0.0	104.7
Upper cretaceous (Eagle Ford/Agua Nueva/Maltrata)	0.0	26.3	0.0	0.0	26.3
Upper jurassic tithonian (La Casita/Pimienta)	44.3	34.1	0.0	0.0	78.4



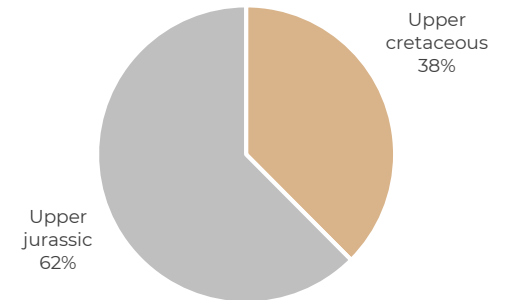
Unconventional prospective resources
Bboe per basin



Unconventional prospective resources
share by hydrocarbon type



Unconventional prospective resources
share by geological age



Note: Reported values at mean as the best estimate.
Source: Prospective resources historical database and estimates by the Comisión Nacional de Hidrocarburos.

Prospective resources: Estimated volume of hydrocarbons at a given date, corresponding to accumulations that have not yet been discovered but it is inferred that they exist based on available information and are estimated to be potentially recoverable through the application of future exploration and development projects.

Conventional play: A set of related fields or prospects, which share similar characteristics in deposit environment, seals, source rocks, traps, the process of hydrocarbons loading (generation, expulsion, synchrony, migration, accumulation and preservation) and type of hydrocarbons.

Unconventional play: Oil system confined in rocks of very fine grains (argillaceous or calcareous), that are organically rich, low in permeability, and are simultaneously generating, reservoir rocks and trap seal, with lithological characteristics that favor fragility indices to induce fracturing.

Bboe: billion barrels of oil equivalent.
Bb: billion barrels.
Tcf: trillion cubic feet.