



# Data access Cuitlahuac Burgos

May 2021



Comisión Nacional  
de Hidrocarburos

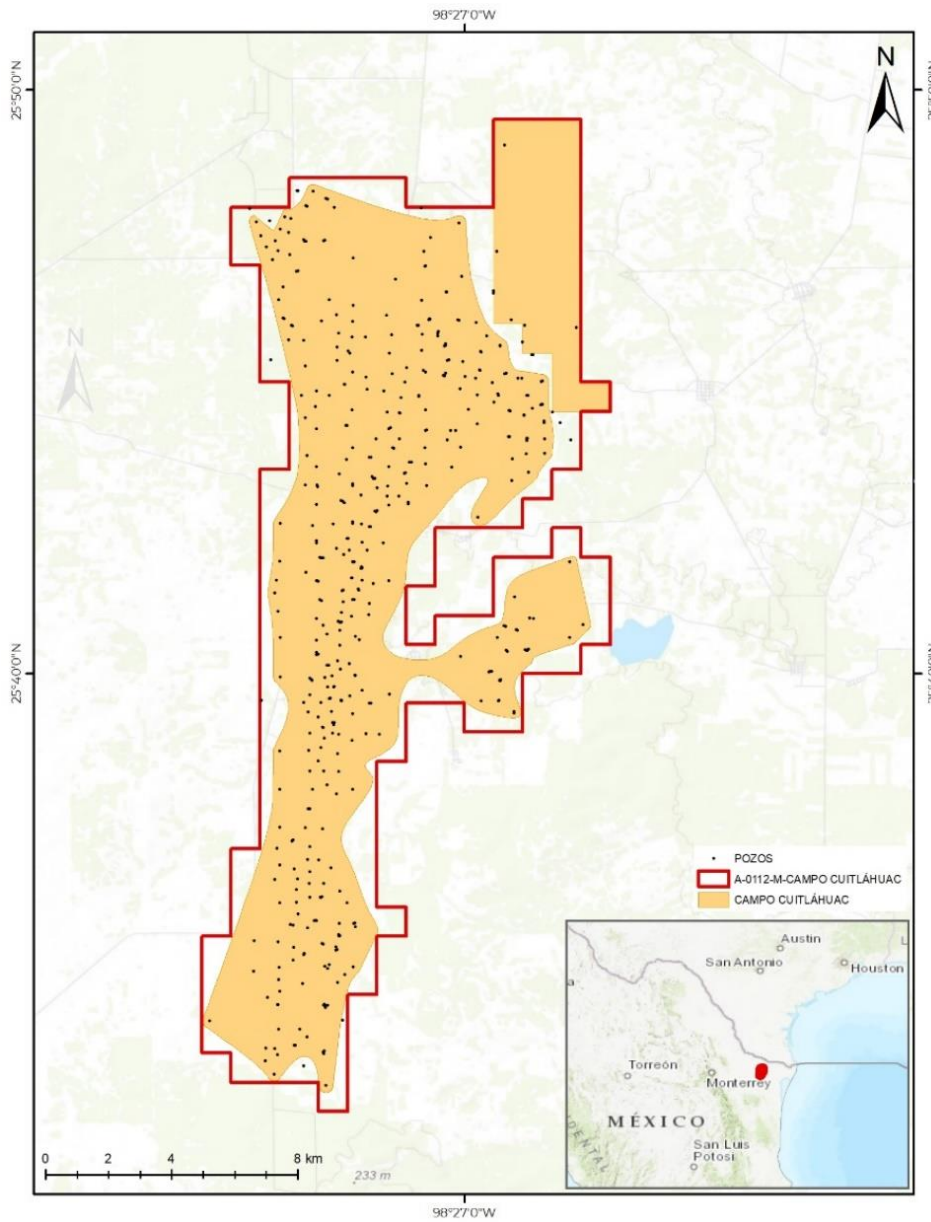
- **DATA ACCESS**

The National Hydrocarbons Information Center (CNIH) makes available to interested companies a Data Package corresponding to Cuitlahuac área in Burgos. The Access through License of Use/Supplement will be able to have access to the necessary data for the analysis of the area.

- **Information package:**

Key	Name	Content	MXP Cost
PD-CUIT	Cuitlahuac Data package	477 wells	\$ 3,085,427

- **LOCATION MAP**



## • WELLS

#	Type	Name	Perforation Year	Result
1	Exploratory	Becerro-1	1950	Dry unproductive
2	Exploratory	Delicias-1	1951	Dry unproductive
3	Exploratory	Castillo-1	1958	Dry unproductive
4	Exploratory	Becerro-2	1960	Gas and condensate producer
5	Development	Becerro-5	1961	Dry unproductive
6	Exploratory	Delicias-3	1965	Dry unproductive
7	Development	Blanquita-2	1968	Dry unproductive
8	Exploratory	Rene-1	1968	Gas and condensate producer
9	Exploratory	Gomeno-1	1969	Gas and condensate producer
10	Development	Oregano-2	1969	Gas and condensate producer
11	Exploratory	Rene-2	1970	Gas and condensate producer
12	Development	Rene-3	1970	Gas and condensate producer
13	Exploratory	Rene Norte-1	1971	Dry unproductive
14	Exploratory	Cacama-1	1972	Gas and condensate producer
15	Development	Cacama-2	1972	Dry unproductive
16	Exploratory	Cuitlahuac-1	1972	Gas and condensate producer
17	Exploratory	Zapata-1	1972	Dry unproductive
18	Development	Cacama-3	1973	Gas and condensate producer
19	Development	Cuitlahuac-2	1973	Gas and condensate producer
20	Development	Cuitlahuac-3	1973	Gas and condensate producer
21	Development	Cuitlahuac-4	1974	Gas and condensate producer
22	Development	Cuitlahuac-40	1974	Gas and condensate producer
23	Development	Cuitlahuac-6	1974	Gas and condensate producer
24	Development	Cuitlahuac-9	1974	Gas and condensate producer
25	Development	Cuitlahuac-10	1975	Gas and condensate producer
26	Development	Cuitlahuac-128	1975	Gas and condensate producer
27	Development	Cuitlahuac-21	1975	Gas and condensate producer
28	Development	Cuitlahuac-29	1975	Gas and condensate producer
29	Development	Cuitlahuac-421	1975	Gas and condensate producer
30	Development	Cuitlahuac-5	1975	Gas and condensate producer
31	Development	Cuitlahuac-7	1975	Gas and condensate producer
32	Development	Cuitlahuac-108	1976	Dry unproductive
33	Development	Cuitlahuac-403	1976	Gas and condensate producer
34	Development	Cuitlahuac-441	1976	Gas and condensate producer
35	Development	Cuitlahuac-461	1976	Gas and condensate producer
36	Development	Cuitlahuac-481	1976	Gas and condensate producer
37	Development	Cuitlahuac-691	1976	Gas and condensate producer

38	Development	Cuitlahuac-423	1977	Gas and condensate producer
39	Development	Cuitlahuac-437	1977	Dry unproductive
40	Development	Cuitlahuac-443	1977	Gas and condensate producer
41	Development	Cuitlahuac-463	1977	Gas and condensate producer
42	Development	Cuitlahuac-483	1977	Dry unproductive
43	Development	Cuitlahuac-671	1977	Gas and condensate producer
44	Development	Cuitlahuac-387	1978	Gas and condensate producer
45	Development	Cuitlahuac-389	1978	Gas and condensate producer
46	Development	Cuitlahuac-488	1978	Dry unproductive
47	Development	Cuitlahuac-631	1978	Gas and condensate producer
48	Development	Cuitlahuac-651	1978	Dry unproductive
49	Development	Cuitlahuac-671A	1978	Gas and condensate producer
50	Development	Cuitlahuac-442	1979	Dry unproductive
51	Development	Cuitlahuac-601	1979	Gas and condensate producer
52	Development	Cuitlahuac-611	1979	Dry unproductive
53	Development	Cuitlahuac-653	1979	Gas and condensate producer
54	Development	Cuitlahuac-365	1980	Gas and condensate producer
55	Development	Cuitlahuac-595	1980	Gas and condensate producer
56	Development	Cuitlahuac-602	1980	Gas and condensate producer
57	Development	Cuitlahuac-611D	1980	Gas and condensate producer
58	Development	Cuitlahuac-612	1980	Gas and condensate producer
59	Development	Cuitlahuac-621	1980	Gas and condensate producer
60	Development	Cuitlahuac-632	1980	Gas and condensate producer
61	Development	Cuitlahuac-673	1980	Dry unproductive
62	Development	Cuitlahuac-603	1981	Gas and condensate producer
63	Development	Cuitlahuac-604	1981	Gas and condensate producer
64	Development	Cuitlahuac-613	1981	Gas and condensate producer
65	Development	Cuitlahuac-622	1981	Gas and condensate producer
66	Development	Cuitlahuac-633	1981	Gas and condensate producer
67	Development	Cuitlahuac-641	1981	Gas and condensate producer
68	Development	Cuitlahuac-642	1981	Gas and condensate producer
69	Development	Cuitlahuac-652	1981	Gas and condensate producer
70	Development	Cuitlahuac-661	1981	Gas and condensate producer
71	Development	Cuitlahuac-662	1981	Gas and condensate producer
72	Development	Cuitlahuac-602D	1982	Gas and condensate producer
73	Development	Cuitlahuac-612A	1982	Gas and condensate producer
74	Development	Cuitlahuac-614	1982	Gas and condensate producer
75	Development	Cuitlahuac-624	1982	Gas and condensate producer
76	Development	Cuitlahuac-616	1983	Dry unproductive
77	Development	Cuitlahuac-634	1983	Gas and condensate producer

78	Development	Cuitlahuac-606	1984	Gas and condensate producer
79	Development	Cuitlahuac-644	1984	Gas and condensate producer
80	Development	Cuitlahuac-682	1984	Gas and condensate producer
81	Development	Cuitlahuac-972	1984	Gas and condensate producer
82	Development	Cuitlahuac-484	1985	Gas and condensate producer
83	Development	Cuitlahuac-626	1985	Gas and condensate producer
84	Development	Cuitlahuac-646	1985	Gas and condensate producer
85	Development	Cuitlahuac-654	1985	Dry unproductive
86	Development	Cuitlahuac-664	1985	Gas and condensate producer
87	Development	Cuitlahuac-672	1985	Gas and condensate producer
88	Development	Cuitlahuac-684	1985	Gas and condensate producer
89	Development	Cuitlahuac-692	1989	Gas and condensate producer
90	Development	Cuitlahuac-624D	1990	Gas and condensate producer
91	Development	Cuitlahuac-482	1991	Gas and condensate producer
92	Development	Cuitlahuac-632D	1991	Dry unproductive
93	Development	Cuitlahuac-652D	1991	Dry unproductive
94	Development	Cuitlahuac-671H	1991	Gas and condensate producer
95	Development	Cuitlahuac-721	1994	Gas and condensate producer
96	Development	Cuitlahuac-731	1994	Gas and condensate producer
97	Development	Cuitlahuac-751	1994	Gas and condensate producer
98	Development	Cuitlahuac-761	1994	Gas and condensate producer
99	Development	Cuitlahuac-781	1994	Gas and condensate producer
100	Development	Cuitlahuac-711	1995	Gas and condensate producer
101	Development	Cuitlahuac-741	1996	Gas and condensate producer
102	Development	Cuitlahuac-763	1996	Gas and condensate producer
103	Development	Cuitlahuac-844	1996	Gas and condensate producer
104	Development	Cuitlahuac-864	1996	Gas and condensate producer
105	Exploratory	Cronos-1	1997	Gas and condensate producer
106	Development	Cuitlahuac-486	1997	Gas and condensate producer
107	Development	Cuitlahuac-491	1997	Gas and condensate producer
108	Development	Cuitlahuac-503	1997	Gas and condensate producer
109	Development	Cuitlahuac-507	1997	Gas and condensate producer
110	Development	Cuitlahuac-742	1997	Gas and condensate producer
111	Development	Cuitlahuac-801	1997	Gas and condensate producer
112	Development	Cuitlahuac-811	1997	Gas and condensate producer
113	Development	Cuitlahuac-822	1997	Gas and condensate producer
114	Development	Cuitlahuac-905	1997	Gas and condensate producer
115	Development	Cuitlahuac-907	1997	Gas and condensate producer
116	Development	Cuitlahuac-911	1997	Gas and condensate producer
117	Development	Cuitlahuac-913	1997	Gas and condensate producer

118	Development	Cuitlahuac-1031	1998	Gas and condensate producer
119	Development	Cuitlahuac-430	1998	Gas and condensate producer
120	Development	Cuitlahuac-431	1998	Gas and condensate producer
121	Development	Cuitlahuac-451	1998	Gas and condensate producer
122	Development	Cuitlahuac-462	1998	Gas and condensate producer
123	Development	Cuitlahuac-471	1998	Gas and condensate producer
124	Development	Cuitlahuac-472	1998	Gas and condensate producer
125	Development	Cuitlahuac-499	1998	Gas and condensate producer
126	Development	Cuitlahuac-505	1998	Dry unproductive
127	Development	Cuitlahuac-508	1998	Gas and condensate producer
128	Development	Cuitlahuac-516	1998	Gas and condensate producer
129	Development	Cuitlahuac-517	1998	Gas and condensate producer
130	Development	Cuitlahuac-523	1998	Gas and condensate producer
131	Development	Cuitlahuac-571	1998	Gas and condensate producer
132	Development	Cuitlahuac-591	1998	Gas and condensate producer
133	Development	Cuitlahuac-610	1998	Gas and condensate producer
134	Development	Cuitlahuac-635	1998	Gas and condensate producer
135	Development	Cuitlahuac-636	1998	Gas and condensate producer
136	Development	Cuitlahuac-637	1998	Gas and condensate producer
137	Development	Cuitlahuac-656	1998	Gas and condensate producer
138	Development	Cuitlahuac-666	1998	Gas and condensate producer
139	Development	Cuitlahuac-685	1998	Gas and condensate producer
140	Development	Cuitlahuac-712	1998	Dry unproductive
141	Development	Cuitlahuac-771D	1998	Gas and condensate producer
142	Development	Cuitlahuac-812	1998	Gas and condensate producer
143	Development	Cuitlahuac-821	1998	Dry unproductive
144	Development	Cuitlahuac-851	1998	Gas and condensate producer
145	Development	Cuitlahuac-852	1998	Dry unproductive
146	Development	Cuitlahuac-901	1998	Gas and condensate producer
147	Development	Cuitlahuac-920	1998	Gas and condensate producer
148	Development	Cuitlahuac-921	1998	Gas and condensate producer
149	Development	Cuitlahuac-931	1998	Gas and condensate producer
150	Development	Cuitlahuac-961	1998	Gas and condensate producer
151	Development	Cuitlahuac-1022	1999	Gas and condensate producer
152	Development	Cuitlahuac-1027	1999	Gas and condensate producer
153	Development	Cuitlahuac-1030	1999	Gas and condensate producer
154	Development	Cuitlahuac-1032	1999	Gas and condensate producer
155	Development	Cuitlahuac-1050	1999	Dry unproductive
156	Development	Cuitlahuac-464	1999	Gas and condensate producer
157	Development	Cuitlahuac-511	1999	Dry unproductive

158	Development	Cuitlahuac-513	1999	Gas and condensate producer
159	Development	Cuitlahuac-518	1999	Gas and condensate producer
160	Development	Cuitlahuac-519	1999	Gas and condensate producer
161	Development	Cuitlahuac-524	1999	Gas and condensate producer
162	Development	Cuitlahuac-525	1999	Gas and condensate producer
163	Development	Cuitlahuac-563	1999	Gas and condensate producer
164	Development	Cuitlahuac-605	1999	Gas and condensate producer
165	Development	Cuitlahuac-608	1999	Gas and condensate producer
166	Development	Cuitlahuac-686	1999	Gas and condensate producer
167	Development	Cuitlahuac-687	1999	Dry unproductive
168	Development	Cuitlahuac-762	1999	Gas and condensate producer
169	Development	Cuitlahuac-791	1999	Gas and condensate producer
170	Development	Cuitlahuac-864D	1999	Gas and condensate producer
171	Development	Cuitlahuac-871	1999	Gas and condensate producer
172	Development	Cuitlahuac-880	1999	Gas and condensate producer
173	Development	Cuitlahuac-919	1999	Gas and condensate producer
174	Development	Cuitlahuac-950	1999	Gas and condensate producer
175	Development	Cuitlahuac-951	1999	Gas and condensate producer
176	Development	Cuitlahuac-1037	2000	Gas and condensate producer
177	Development	Cuitlahuac-527	2000	Gas and condensate producer
178	Development	Cuitlahuac-615	2000	Gas and condensate producer
179	Development	Cuitlahuac-655	2000	Gas and condensate producer
180	Development	Cuitlahuac-678	2000	Gas and condensate producer
181	Development	Cuitlahuac-680	2000	Gas and condensate producer
182	Development	Cuitlahuac-689	2000	Gas and condensate producer
183	Development	Cuitlahuac-693	2000	Gas and condensate producer
184	Development	Cuitlahuac-785	2000	Gas and condensate producer
185	Development	Cuitlahuac-788	2000	Gas and condensate producer
186	Development	Cuitlahuac-824	2000	Gas and condensate producer
187	Development	Cuitlahuac-828	2000	Gas and condensate producer
188	Development	Cuitlahuac-835	2000	Gas and condensate producer
189	Development	Cuitlahuac-955	2000	Gas and condensate producer
190	Development	Cuitlahuac-956	2000	Gas and condensate producer
191	Development	Cuitlahuac-958	2000	Gas and condensate producer
192	Development	Cuitlahuac-1033	2001	Gas and condensate producer
193	Development	Cuitlahuac-1034	2001	Gas and condensate producer
194	Development	Cuitlahuac-1035	2001	Gas and condensate producer
195	Development	Cuitlahuac-1038	2001	Gas and condensate producer
196	Development	Cuitlahuac-1039	2001	Gas and condensate producer
197	Development	Cuitlahuac-475	2001	Gas and condensate producer

198	Development	Cuitlahuac-476	2001	Gas and condensate producer
199	Development	Cuitlahuac-477	2001	Gas and condensate producer
200	Development	Cuitlahuac-477D	2001	Gas and condensate producer
201	Development	Cuitlahuac-528	2001	Gas and condensate producer
202	Development	Cuitlahuac-540	2001	Gas and condensate producer
203	Development	Cuitlahuac-618	2001	Dry unproductive
204	Development	Cuitlahuac-620	2001	Gas and condensate producer
205	Development	Cuitlahuac-638	2001	Gas and condensate producer
206	Development	Cuitlahuac-639	2001	Gas and condensate producer
207	Development	Cuitlahuac-647	2001	Gas and condensate producer
208	Development	Cuitlahuac-648	2001	Gas and condensate producer
209	Development	Cuitlahuac-663	2001	Gas and condensate producer
210	Development	Cuitlahuac-690	2001	Gas and condensate producer
211	Development	Cuitlahuac-698	2001	Gas and condensate producer
212	Development	Cuitlahuac-782	2001	Gas and condensate producer
213	Development	Cuitlahuac-787	2001	Gas and condensate producer
214	Development	Cuitlahuac-952	2001	Gas and condensate producer
215	Development	Cuitlahuac-953	2001	Gas and condensate producer
216	Development	Cuitlahuac-954	2001	Gas and condensate producer
217	Development	Cuitlahuac-957	2001	Gas and condensate producer
218	Development	Cuitlahuac-959	2001	Gas and condensate producer
219	Development	Cuitlahuac-960	2001	Gas and condensate producer
220	Development	Cuitlahuac-963	2001	Gas and condensate producer
221	Development	Cuitlahuac-964	2001	Gas and condensate producer
222	Development	Cuitlahuac-971	2001	Gas and condensate producer
223	Development	Torreillas-27	2001	Gas and condensate producer
224	Exploratory	Cebu-1	2002	Gas and condensate producer
225	Development	Cuitlahuac-51	2002	Gas and condensate producer
226	Development	Cuitlahuac-512	2002	Gas and condensate producer
227	Development	Cuitlahuac-529	2002	Gas and condensate producer
228	Development	Cuitlahuac-625	2002	Gas and condensate producer
229	Development	Cuitlahuac-627	2002	Gas and condensate producer
230	Development	Cuitlahuac-640	2002	Gas and condensate producer
231	Development	Cuitlahuac-643	2002	Gas and condensate producer
232	Development	Cuitlahuac-649	2002	Gas and condensate producer
233	Development	Cuitlahuac-659	2002	Gas and condensate producer
234	Development	Cuitlahuac-675	2002	Gas and condensate producer
235	Development	Cuitlahuac-694	2002	Gas and condensate producer
236	Development	Cuitlahuac-699	2002	Gas and condensate producer
237	Development	Cuitlahuac-814	2002	Gas and condensate producer



238	Development	Cuitlahuac-815	2002	Gas and condensate producer
239	Development	Cuitlahuac-816	2002	Gas and condensate producer
240	Development	Cuitlahuac-820	2002	Dry unproductive
241	Development	Cuitlahuac-825	2002	Gas and condensate producer
242	Development	Cuitlahuac-857	2002	Gas and condensate producer
243	Development	Cuitlahuac-858	2002	Gas and condensate producer
244	Development	Cuitlahuac-859	2002	Gas and condensate producer
245	Development	Cuitlahuac-860	2002	Gas and condensate producer
246	Development	Cuitlahuac-861	2002	Gas and condensate producer
247	Development	Cuitlahuac-962	2002	Gas and condensate producer
248	Development	Cuitlahuac-965	2002	Gas and condensate producer
249	Development	Cuitlahuac-966	2002	Gas and condensate producer
250	Development	Cuitlahuac-967	2002	Gas and condensate producer
251	Development	Cuitlahuac-973	2002	Gas and condensate producer
252	Development	Torrecillas-50	2002	Gas and condensate producer
253	Development	Torrecillas-51	2002	Gas and condensate producer
254	Development	Torrecillas-52	2002	Gas and condensate producer
255	Development	Cuitlahuac-388	2003	Gas and condensate producer
256	Development	Cuitlahuac-422	2003	Gas and condensate producer
257	Development	Cuitlahuac-478	2003	Gas and condensate producer
258	Development	Cuitlahuac-479	2003	Gas and condensate producer
259	Development	Cuitlahuac-50	2003	Gas and condensate producer
260	Development	Cuitlahuac-520	2003	Gas and condensate producer
261	Development	Cuitlahuac-530	2003	Gas and condensate producer
262	Development	Cuitlahuac-531	2003	Gas and condensate producer
263	Development	Cuitlahuac-560	2003	Gas and condensate producer
264	Development	Cuitlahuac-561	2003	Gas and condensate producer
265	Development	Cuitlahuac-623	2003	Gas and condensate producer
266	Development	Cuitlahuac-699D	2003	Unproductive, overrun with salt water
267	Development	Cuitlahuac-770	2003	Gas and condensate producer
268	Development	Cuitlahuac-772	2003	Gas and condensate producer
269	Development	Cuitlahuac-789	2003	Gas and condensate producer
270	Development	Cuitlahuac-802	2003	Gas and condensate producer
271	Development	Cuitlahuac-803	2003	Gas and condensate producer
272	Development	Cuitlahuac-804	2003	Gas and condensate producer
273	Development	Cuitlahuac-838	2003	Gas and condensate producer
274	Development	Cuitlahuac-839	2003	Gas and condensate producer
275	Development	Cuitlahuac-842	2003	Gas and condensate producer
276	Development	Cuitlahuac-847	2003	Gas and condensate producer
277	Development	Cuitlahuac-862	2003	Gas and condensate producer

278	Development	Cuitlahuac-863	2003	Gas and condensate producer
279	Development	Cuitlahuac-970	2003	Gas and condensate producer
280	Development	Torreccillas-193	2003	Gas and condensate producer
281	Development	Cuitlahuac-386	2004	Gas and condensate producer
282	Development	Cuitlahuac-424	2004	Gas and condensate producer
283	Development	Cuitlahuac-426	2004	Gas and condensate producer
284	Development	Cuitlahuac-427	2004	Gas and condensate producer
285	Development	Cuitlahuac-480	2004	Gas and condensate producer
286	Development	Cuitlahuac-487	2004	Gas and condensate producer
287	Development	Cuitlahuac-489	2004	Gas and condensate producer
288	Development	Cuitlahuac-509	2004	Gas and condensate producer
289	Development	Cuitlahuac-510	2004	Gas and condensate producer
290	Development	Cuitlahuac-515	2004	Gas and condensate producer
291	Development	Cuitlahuac-521	2004	Gas and condensate producer
292	Development	Cuitlahuac-522	2004	Gas and condensate producer
293	Development	Cuitlahuac-526	2004	Gas and condensate producer
294	Development	Cuitlahuac-607	2004	Gas and condensate producer
295	Development	Cuitlahuac-609	2004	Gas and condensate producer
296	Development	Cuitlahuac-617	2004	Dry unproductive
297	Development	Cuitlahuac-619	2004	Gas and condensate producer
298	Development	Cuitlahuac-665	2004	Gas and condensate producer
299	Development	Cuitlahuac-667	2004	Gas and condensate producer
300	Development	Cuitlahuac-688	2004	Gas and condensate producer
301	Development	Cuitlahuac-783	2004	Gas and condensate producer
302	Development	Cuitlahuac-786	2004	Gas and condensate producer
303	Development	Cuitlahuac-792	2004	Gas and condensate producer
304	Development	Cuitlahuac-800	2004	Gas and condensate producer
305	Development	Cuitlahuac-805	2004	Gas and condensate producer
306	Development	Cuitlahuac-813	2004	Gas and condensate producer
307	Development	Cuitlahuac-827	2004	Gas and condensate producer
308	Development	Cuitlahuac-832	2004	Dry unproductive
309	Development	Cuitlahuac-865	2004	Gas and condensate producer
310	Development	Cuitlahuac-867	2004	Gas and condensate producer
311	Development	Cuitlahuac-870	2004	Gas and condensate producer
312	Development	Cuitlahuac-872	2004	Gas and condensate producer
313	Development	Cuitlahuac-873	2004	Gas and condensate producer
314	Development	Cuitlahuac-874	2004	Gas and condensate producer
315	Development	Cuitlahuac-875	2004	Gas and condensate producer
316	Development	Cuitlahuac-876	2004	Gas and condensate producer
317	Development	Cuitlahuac-968	2004	Gas and condensate producer

318	Exploratory	Rotonda-1	2004	Dry unproductive
319	Development	Cuitlahuac-366	2005	Gas and condensate producer
320	Development	Cuitlahuac-385	2005	Gas and condensate producer
321	Development	Cuitlahuac-390	2005	Dry unproductive
322	Development	Cuitlahuac-391	2005	Gas and condensate producer
323	Development	Cuitlahuac-392	2005	Gas and condensate producer
324	Development	Cuitlahuac-393	2005	Gas and condensate producer
325	Development	Cuitlahuac-394	2005	Gas and condensate producer
326	Development	Cuitlahuac-396	2005	Gas and condensate producer
327	Development	Cuitlahuac-397	2005	Gas and condensate producer
328	Development	Cuitlahuac-444	2005	Gas and condensate producer
329	Development	Cuitlahuac-445	2005	Gas and condensate producer
330	Development	Cuitlahuac-446	2005	Gas and condensate producer
331	Development	Cuitlahuac-474	2005	Gas and condensate producer
332	Development	Cuitlahuac-629	2005	Gas and condensate producer
333	Development	Cuitlahuac-645	2005	Gas and condensate producer
334	Development	Cuitlahuac-668	2005	Gas and condensate producer
335	Development	Cuitlahuac-674	2005	Gas and condensate producer
336	Development	Cuitlahuac-676	2005	Gas and condensate producer
337	Development	Cuitlahuac-679	2005	Gas and condensate producer
338	Development	Cuitlahuac-681	2005	Gas and condensate producer
339	Development	Cuitlahuac-806	2005	Gas and condensate producer
340	Development	Cuitlahuac-818	2005	Gas and condensate producer
341	Development	Cuitlahuac-819	2005	Gas and condensate producer
342	Development	Cuitlahuac-823	2005	Gas and condensate producer
343	Development	Cuitlahuac-826	2005	Gas and condensate producer
344	Development	Cuitlahuac-845	2005	Gas and condensate producer
345	Development	Cuitlahuac-846	2005	Gas and condensate producer
346	Development	Cuitlahuac-866	2005	Gas and condensate producer
347	Development	Cuitlahuac-877	2005	Gas and condensate producer
348	Development	Cuitlahuac-914	2005	Gas and condensate producer
349	Development	Cuitlahuac-948	2005	Gas and condensate producer
350	Development	Cuitlahuac-974	2005	Gas and condensate producer
351	Development	Cuitlahuac-1020	2006	Gas and condensate producer
352	Development	Cuitlahuac-398	2006	Gas and condensate producer
353	Development	Cuitlahuac-399	2006	Gas and condensate producer
354	Development	Cuitlahuac-533	2006	Gas and condensate producer
355	Development	Cuitlahuac-658	2006	Gas and condensate producer
356	Development	Cuitlahuac-670	2006	Gas and condensate producer
357	Development	Cuitlahuac-695	2006	Gas and condensate producer

358	Development	Cuitlahuac-796	2006	Gas and condensate producer
359	Development	Cuitlahuac-807	2006	Gas and condensate producer
360	Development	Cuitlahuac-829	2006	Gas and condensate producer
361	Development	Cuitlahuac-841	2006	Gas and condensate producer
362	Development	Cuitlahuac-843	2006	Gas and condensate producer
363	Development	Cuitlahuac-850	2006	Gas and condensate producer
364	Development	Cuitlahuac-878	2006	Gas and condensate producer
365	Development	Cuitlahuac-881	2006	Gas and condensate producer
366	Development	Cuitlahuac-900	2006	Gas and condensate producer
367	Development	Cuitlahuac-382	2007	Gas and condensate producer
368	Development	Cuitlahuac-600	2007	Gas and condensate producer
369	Development	Cuitlahuac-650	2007	Gas and condensate producer
370	Development	Cuitlahuac-657	2007	Gas and condensate producer
371	Development	Cuitlahuac-669	2007	Gas and condensate producer
372	Development	Cuitlahuac-696	2007	Gas and condensate producer
373	Development	Cuitlahuac-697	2007	Gas and condensate producer
374	Development	Cuitlahuac-831	2007	Gas and condensate producer
375	Development	Cuitlahuac-848	2007	Gas and condensate producer
376	Development	Cuitlahuac-855	2007	Dry unproductive
377	Development	Cuitlahuac-856	2007	Gas and condensate producer
378	Development	Cuitlahuac-890	2007	Gas and condensate producer
379	Development	Cuitlahuac-903	2007	Gas and condensate producer
380	Development	Cuitlahuac-1025	2008	Gas and condensate producer
381	Development	Cuitlahuac-381	2008	Gas and condensate producer
382	Development	Cuitlahuac-383	2008	Gas and condensate producer
383	Development	Cuitlahuac-677	2008	Gas and condensate producer
384	Development	Cuitlahuac-683	2008	Gas and condensate producer
385	Development	Cuitlahuac-750	2008	Gas and condensate producer
386	Development	Cuitlahuac-809	2008	Gas and condensate producer
387	Development	Cuitlahuac-810	2008	Gas and condensate producer
388	Development	Cuitlahuac-830	2008	Gas and condensate producer
389	Development	Cuitlahuac-840	2008	Gas and condensate producer
390	Development	Cuitlahuac-882	2008	Gas and condensate producer
391	Development	Cuitlahuac-1018	2009	Gas and condensate producer
392	Development	Cuitlahuac-372	2009	Gas and condensate producer
393	Development	Cuitlahuac-373	2009	Gas and condensate producer
394	Development	Cuitlahuac-466	2009	Gas and condensate producer
395	Development	Cuitlahuac-470	2009	Gas and condensate producer
396	Development	Cuitlahuac-532	2009	Gas and condensate producer
397	Development	Cuitlahuac-700	2009	Gas and condensate producer

398	Development	Cuitlahuac-780	2009	Gas and condensate producer
399	Development	Cuitlahuac-817	2009	Gas and condensate producer
400	Development	Cuitlahuac-833	2009	Gas and condensate producer
401	Development	Cuitlahuac-834	2009	Gas and condensate producer
402	Development	Cuitlahuac-849	2009	Gas and condensate producer
403	Development	Cuitlahuac-869	2009	Gas and condensate producer
404	Development	Cuitlahuac-879	2009	Gas and condensate producer
405	Development	Cuitlahuac-883	2009	Gas and condensate producer
406	Development	Cuitlahuac-889	2009	Gas and condensate producer
407	Development	Cuitlahuac-947	2009	Gas and condensate producer
408	Development	Cuitlahuac-1019	2010	Gas and condensate producer
409	Development	Cuitlahuac-534	2010	Unidentified
410	Development	Cuitlahuac-628	2010	Gas and condensate producer
411	Development	Cuitlahuac-703	2010	Gas and condensate producer
412	Development	Cuitlahuac-714	2010	Gas and condensate producer
413	Development	Cuitlahuac-718	2010	Gas and condensate producer
414	Development	Cuitlahuac-836	2010	Gas and condensate producer
415	Development	Cuitlahuac-884	2010	Gas and condensate producer
416	Development	Cuitlahuac-885	2010	Gas and condensate producer
417	Development	Cuitlahuac-886	2010	Gas and condensate producer
418	Development	Cuitlahuac-949	2010	Gas and condensate producer
419	Development	Cuitlahuac-1084	2011	Gas and condensate producer
420	Development	Cuitlahuac-384	2011	Gas and condensate producer
421	Development	Cuitlahuac-467	2011	Gas and condensate producer
422	Development	Cuitlahuac-502	2011	Gas and condensate producer
423	Development	Cuitlahuac-504	2011	Gas and condensate producer
424	Development	Cuitlahuac-506	2011	Gas and condensate producer
425	Development	Cuitlahuac-660	2011	Gas and condensate producer
426	Development	Cuitlahuac-716	2011	Gas and condensate producer
427	Development	Cuitlahuac-719	2011	Gas and condensate producer
428	Development	Cuitlahuac-777	2011	Gas and condensate producer
429	Development	Cuitlahuac-853	2011	Gas and condensate producer
430	Development	Cuitlahuac-868	2011	Gas and condensate producer
431	Development	Cuitlahuac-887	2011	Gas and condensate producer
432	Development	Cuitlahuac-891	2011	Gas and condensate producer
433	Development	Cuitlahuac-892	2011	Gas and condensate producer
434	Development	Cuitlahuac-894	2011	Dry gas producer
435	Development	Cuitlahuac-896	2011	Gas and condensate producer
436	Development	Cuitlahuac-897	2011	Gas and condensate producer
437	Development	Cuitlahuac-898	2011	Gas and condensate producer

438	Development	Cuitlahuac-902	2011	Gas and condensate producer
439	Development	Cuitlahuac-976	2011	Gas and condensate producer
440	Development	Cuitlahuac-977	2011	Gas and condensate producer
441	Development	Cuitlahuac-1086	2012	Gas and condensate producer
442	Development	Cuitlahuac-590	2012	Gas and condensate producer
443	Development	Cuitlahuac-720	2012	Gas and condensate producer
444	Development	Cuitlahuac-773	2012	Gas and condensate producer
445	Development	Cuitlahuac-888	2012	Gas and condensate producer
446	Development	Cuitlahuac-893	2012	Gas and condensate producer
447	Development	Cuitlahuac-895	2012	Gas and condensate producer
448	Development	Cuitlahuac-899	2012	Gas and condensate producer
449	Development	Cuitlahuac-908	2012	Gas and condensate producer
450	Development	Cuitlahuac-912	2012	Gas and condensate producer
451	Development	Cuitlahuac-915	2012	Gas and condensate producer
452	Development	Cuitlahuac-969	2012	Gas and condensate producer
453	Development	Cuitlahuac-993	2012	Gas and condensate producer
454	Development	Cuitlahuac-1041	2013	Gas and condensate producer
455	Development	Cuitlahuac-1087	2013	Gas and condensate producer
456	Development	Cuitlahuac-985	2013	Gas and condensate producer
457	Development	Cuitlahuac-992	2013	Gas and condensate producer
458	Development	Cuitlahuac-995	2013	Gas and condensate producer
459	Development	Cuitlahuac-996	2013	Gas and condensate producer
460	Development	Cuitlahuac-1054	2014	Gas and condensate producer
461	Development	Cuitlahuac-1062	2014	Gas and condensate producer
462	Development	Cuitlahuac-1089	2014	Gas and condensate producer
463	Development	Cuitlahuac-1091	2014	Gas and condensate producer
464	Development	Cuitlahuac-1092	2014	Gas and condensate producer
465	Development	Cuitlahuac-460	2014	Gas and condensate producer
466	Development	Cuitlahuac-779	2014	Gas and condensate producer
467	Development	Cuitlahuac-978	2014	Gas and condensate producer
468	Development	Cuitlahuac-987	2014	Gas and condensate producer
469	Development	Cuitlahuac-591D	2015	Gas and condensate producer
470	Development	Cuitlahuac-775	2015	Gas and condensate producer
471	Development	Cuitlahuac-467D-Des	2019	Gas and condensate producer
472	Development	Cuitlahuac-536Des	2019	Gas and condensate producer
473	Development	Cuitlahuac-946Des	2019	Gas and condensate producer
474	Development	Cuitlahuac-970D-Des	2019	Gas and condensate producer
475	Development	Cuitlahuac-989Des	2019	Gas and condensate producer
476	Development	Cuitlahuac-1077Des	2020	Gas and condensate producer
477	Development	Cuitlahuac-991-Des	2020	Gas and condensate producer

- GEOPHYSICS**

Includes a migrated version pre-stacked in time of nearby traces with Radon filter in phase zero of 3D Seismic corresponding to the Cuitlahuac study:

Seismic Study	Version /Process	Adquisition year	Process year	Volumen (GB)	Km <sup>2</sup>	File name
CUITLAHUAC	Seismic data conditioning. Seismic stacking with zero phase radon filter, without filter and without gain.	1998	2013	1.16	840	sismicaapilada_2013.sgy

- 3D SEISMIC AND WELLS MAP**

